



Temperature Measuring & Disinfection Station (FAST-Y-90S)

Installation & Operation Manual

*Integration of temperature measurement, disinfection, security inspection
and attendance*

Big data dynamic tracking and management & Remote intelligent control

CONTENTS

Summary	3
Product Overview	3
Application Range	3
Product Advantage	3
Major Function	3
Product Assembly Drawing	4
Device Operation	5
Plug In, Startup / Shutdown	6
Hand Sterilizer Dispenser	6
Operation of Temperature Measurement System	7
Operation of Spray Disinfection System	7
Operation of Lighting System	7
Operation of Other Buttons	7
Operation of Adding Disinfectant	8
Maintenance	9
Preparation Work Before Maintenance	9
Maintenance Operations	9
Work After Maintenance	9
Technical Parameters	10
Matters Needing Attention	11
External Power Supply	11
Emergency Stop Switch	11
Routine Inspection and Maintenance	11
Selection and Preparation of Spraying Disinfectant	11
Inspection Before Use	11
After-Sales Service	12
Contact Information	12
Technical Failure	12

Summary

Product Overview

The unit consists of temperature measurement system, non-contact inductive hands sterilizer, sole and below waist disinfection system, metal detection and security inspection system, ticket gate at entrance and exit, lighting system, electrical control system and big data platform system, which is designed for temperature measurement, sterilization, metal detection and security inspection of people in and out, and tracing and management of the collected temperature data.

Application Range

The unit can be applied to airports, train stations, subway stations, schools, hospitals, hotels, shopping malls, cinema, office buildings, residence community, farmers market and other crowded public places to conduct temperature measurement, disinfection, metal detection and security inspection for the people in and out.

Product Advantage

Temperature measurement + hands disinfection + sole disinfection and disinfection below waist + metal detection and security inspection; The data is bound to the identity of the personnel in and out by face recognition; The background big data system can track and manage the collected temperature measurement data; The product has obtained EU CE certification.

Major Function

Temperature measurement system: It applies an infrared thermal imaging thermometer, which can automatically give an alarm on the abnormal temperature. The data can be bound to the identity of the personnel in and out by face recognition.

Non-contact inductive hands sterilizer: It applies 75% alcohol for hands sterilization.

Sole and below waist disinfection system: Disinfection blanket soaked with disinfectant is set below the unit to disinfect the soles of the people in and out.

Disinfectant spraying systems are set on both sides of the unit, which are mainly applied to disinfect the part below the chest;

Metal detection and security inspection system: Metal detection device is applied to carry out metal detection and security inspection for people passing through, which will automatically give an alarm in case of abnormality.

Ticket gate at entrance and exit: It applies an automatic ticket gate system. If the results of temperature and metal detection security inspection are normal, the gate opens automatically. When people passed the tunnel, the gate will close automatically.

Lighting system: The LED light is applied on the roof for lighting.

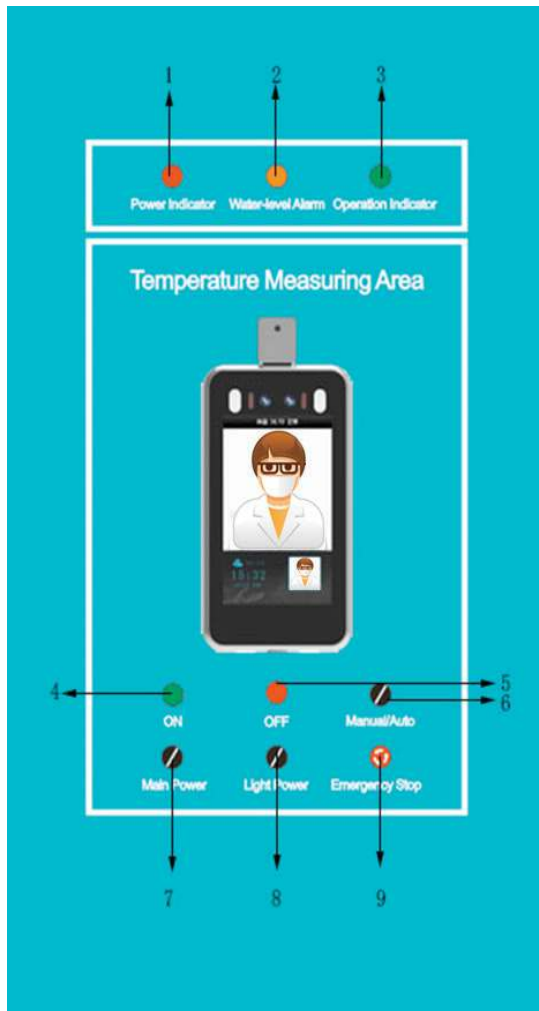
Electrical control system: It consists of electrical control module, sensor and thermometer, which is used for operation and control of various functions, low level alarm of disinfectant water tank, etc.

Big data platform: It consists of data service center, data collection, analysis and background management system.

Product Assembly Drawing



Device Operation



Buttons Instruction

- 1 Power Indicator
- 2 Water-level Alarm
- 3 Operation Indicator
- 4 Spray Startup (Manual)
- 5 Spray Shutdown (Manual)
- 6 Manual / Auto Mode Switch
- 7 Main Power Switch
- 8 Light Switch
- 9 Emergency Stop

Plug In, Startup / Shutdown

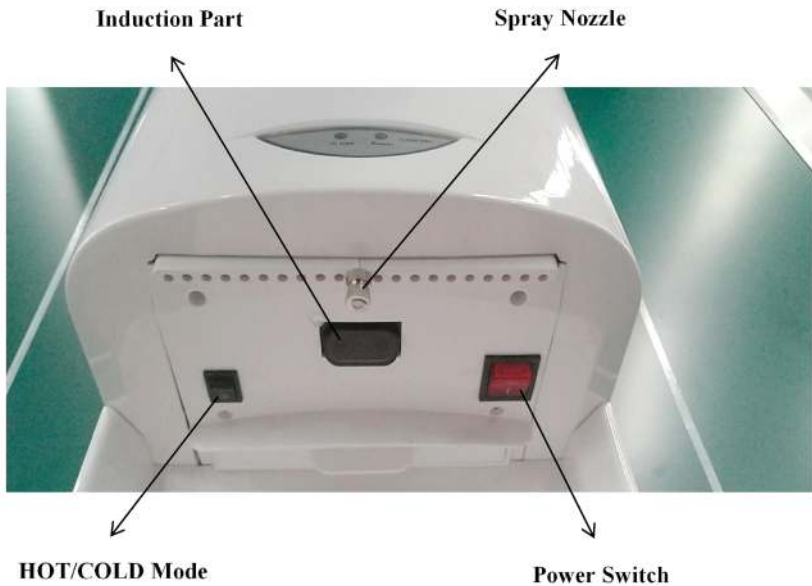
Switch on the power supply and plug the power plug of the equipment into the socket of the external power supply (grounding terminal is required);

When starting up, turn the main power button on the device to the right side and the red power indicator lights up, indicating that the power has been switched on.

To shut down, turn the main power button on the device to the left side and the red power indicator will go off, indicating that the power has been disconnected.

Hand Sterilizer Dispenser

Make sure that the power supply of the equipment is on and the hand sterilizer dispenser is energized. Put the hand in, the device will start automatically, and when the hand leaves, it will stop automatically.



(Front Upward View)

Operation of Temperature Measurement System

Make sure that the power of the device is switched on. After the face is aligned according to the screen prompt, the temperature will be automatically identified and measured. If the temperature is in normal range, the gate door will open automatically and personnel passes quickly. If an abnormal temperature is detected, the voice alarm will be activated

Operation of Spray Disinfection System

Setting:

Ensure that the power of the equipment is on:

Rotate the Manual/Auto button on the device to the right side, and the spray disinfection system will be in automatic mode.

Turn the Manual/Auto button on the device to the left, and the spray disinfection system is in manual mode.

Rotate the Manual/Auto button on the device to the middle, and the spray disinfection system will stop.

Startup / Shutdown:

Manual: Ensure that the power supply of the equipment is on, the disinfection system is adjusted to manual mode, press the start button on the equipment, the green operation indicator lights up, and the disinfection system starts to work; After the personnel passed through, press the stop button on the equipment, the green running indicator light will be off, and the disinfection system will stop working.

Auto: Ensure that the equipment power is on, the disinfection system is adjusted to the automatic mode, when the personnel is passing, the disinfection system will automatically start work, when the personnel passed through, the disinfection system will automatically shut down°

Operation of Lighting System

Make sure the equipment is powered on. Turn the light switch knob to the right and the lighting system will start immediately. Turn the switch knob to the left and the lighting system will be turned off

Operation of Other Buttons

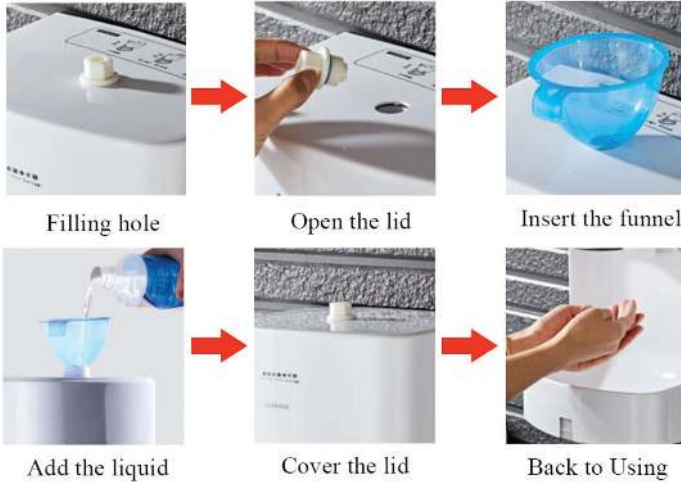
Press the emergency stop button on the device to cut off all power

If the water level alarm **indicator** is **light up**, indicating that the disinfectant tank needs to be replenished.

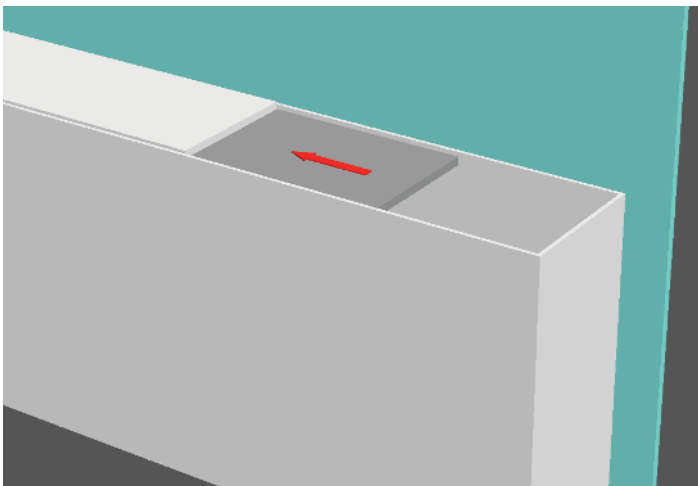
Operation of Adding Disinfectant

When adding hand sanitizer, the main power supply should be cut off before proceeding as shown in the below figure. 75% alcohol is recommended for hand sanitizers.

Liquid adding process



When adding the spray disinfectant, the main power supply should be cut off first. Open the top of the water tank and fill with disinfectant directly as shown. The spray disinfectant is recommended to be used with the disinfectant recommended by the local health department and its configuration ratio.



Maintenance

In order to ensure the normal operation of the unit, Users need to perform the daily maintenance of the unit.

Preparation Work Before Maintenance

Before the daily maintenance of the unit, turn off the plug of the unit and the external power supply. The maintenance must be carried out under the condition of power off.

Maintenance Operations

Daily maintenance of temperature measurement system: Due to dust accumulation on the camera and low face recognition rate, soft towel should be used to clean the dust on the camera.

Work After Maintenance

After each maintenance and before reuse, the unit shall be put into trial operation for 5 minutes to ensure normal operation.

Technical Parameters

Items	Technical Parameters	Remarks
Dimensions (W x H x D)	FAST-Y-90S-S: 900×2000×1500mm	●
	FAST-Y-90S-M: 2600×2000×1500mm	
	FAST-Y-90S-L: 4500×2000×1500mm	
Thermometer	Infrared thermal imaging thermometer with integrated display screen	●
Voice alarm	Which will give an alarm on the abnormal temperature	●
Hands sterilizer	FAST-Y-90S-M: 1 set	●
	FAST-Y-90S-L: 2 sets	●
Control method	Manual; Automatic; Wechat applet; Remote control	●
Power (V)	AC220	●
Frequency (Hz)	50	
Device power (KW)	FAST-Y-90S-S: <0.5	●
	FAST-Y-90S-M: <1.8	
	FAST-Y-90S-L: <1.8	
PLC module	Made in China; Siemens; Customized	○
Colors	Multi-scenario; Various styles	○
Lighting	LED lamp belt/tube	○
Total weight (kg)	FAST-Y-90S-S: <150	●
	FAST-Y-90S-M: <500	
	FAST-Y-90S-L: <800	
Security inspection system	Metal detection device	○
Ticket gate	Automatic	○
Bottom wheels	Universal wheels that can be adjusted	○

Note: ● Standard ○ Optional

Matters Needing Attention

In order to ensure safe, efficient and convenient application of this unit, please read the following precautions carefully.

External Power Supply

The external connection of power supply must be connected by a professional electrician. When the unit is connected to the external power supply, it shall be put into trial operation for at least 2 hours, and it can be used normally if there is no defect in the trial operation.

Emergency Stop Switch

Before using the unit, Users must check whether the switch is in a state of pop-up.

Routine Inspection and Maintenance

The Users should carry out routine inspection on the device in the process of application and do well in daily maintenance.

Selection and Preparation of Spraying Disinfectant

Spraying disinfectants should be selected from the products recommended by the health department, and be strictly implemented according to the disinfectant instructions.

Inspection Before Use

During the process of transportation, individual fasteners may become loose. Thus, the comprehensive inspection shall be carried out before application to ensure the safety of all fasteners and product application.

After-Sale Service

Contact Information:

Customer service Tel.: (+ 86) 400-601-8390

Company email: sales@i-wind.com

Official website: www.i-wind.com

Technical Failure:

If Users connect the external power supply and operate the device properly according to operation instructions, but the device can not work normally, please open the inspection door, check whether the power leakage protection switch is closed. If it still can not work normally, please contact our after-sales service personnel or authorized agent at the first time, so as to avoid subsequent damage or potential safety hazard.